



the future is safer with altro

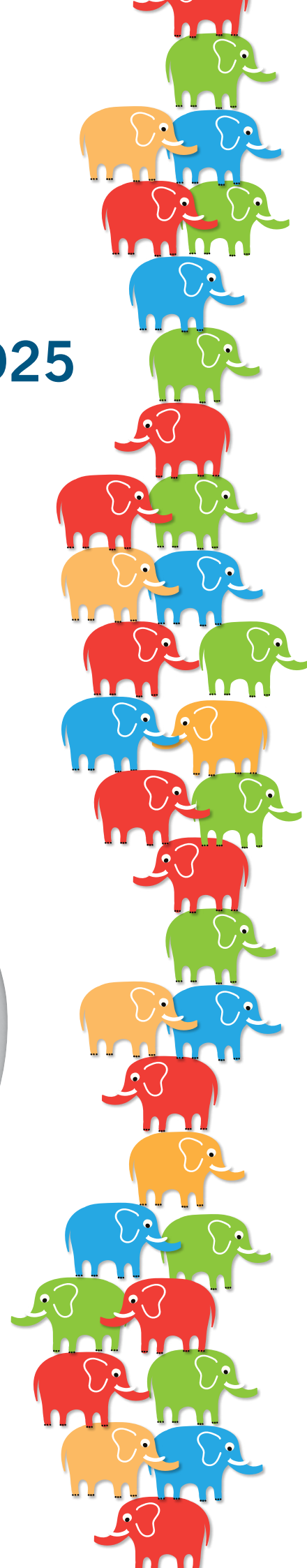
Altro Designer™ 25 / D25

Altro Unity™ 25

Durable, rugged and stylishly tough
great for wheeled and high traffic areas.

These products can withstand the pressure of 127 elephants standing on top of each other! Test result based on average sized, normally fed, adult African elephants, weighing 14,000lbs each.

No elephants were harmed in this test!



Altro Unity™ 25 and Altro Designer™ 25 / D25 safety flooring

AKUK 08/15

Flooring type Tipo de pavimento Belagsart		EN 13845/ EN 13553	Safety flooring Suelo de seguridad antideslizante Sicherheitsbodenbelag
Classification for use Areas de uso Einsatzbereiche		EN 685	34 & 43 34 y 43 34 & 43
Slip resistance* Resistencia al deslizamiento* Rutschsicherheit*		TRRL EN 13845 EN 13893 DIN 51130	Unity 25 D25 ≥ 40 ESf DS R10 ≥ 40 ESf DS R10
Thickness Espesor Total Gesamtdicke		EN 428	2.5 mm 2.5 mm
Wear layer Capa de uso Nutzschicht		EN 429	2.5 mm 2.5 mm
Weight Peso Flächengewicht		EN 430	3.2 kg/m ² 3.3 kg/m ²
Roll dimensions Dimensiones del rollo Rollenabmessungen		EN 426	2 m x 20 m = 40 m ² 2 m x 20 m = 40 m ²
Sound insulation Aislamiento acústico Trittschall		ISO 140-8	7 dB 7 dB
Flexibility Flexibilidad Flexibilität		EN 435	Pass Conforme bestanden
Light fastness Resistencia a la luz Lichtechtheit		EN 20105-B02	≥6
Wear resistance Abrasión Verschleißverhalten		EN 13845	≤10% particles lost over 50000 cycles ≤10% de las partículas perdidas en 50.000 ciclos ≤10% Partikel werden über 50000 Umdrehungen verloren
Indentation Punzonamiento Resteindruck		EN 433	≤ 0.10mm
Fire performance Reacción al fuego Brandverhalten		EN 13501-1 EN ISO 9239-1 EN ISO 11925-2	Class Bfl-s1 ≥8kW/m ² pass Clase Bfl-s1 ≥8kW/m ² conforme Klasse Bfl-s1 ≥8kW/m ² bestanden
Chemical resistance** Resistencia a los productos químicos** Chemikalieneinwirkung**		EN 423	Good Buena beständig
Castor chair abrasion Huellas de sillas de ruedas Stuhlrollenbeanspruchung		EN 425	Pass Conforme geeignet
Under floor heating Calefacción por el suelo Fußbodenheizung		EN 12667	Suitable Apto geeignet
Electrical behaviours Caraterísticas eléctricas Elektrisches Verhalten		EN 1815	≤ 2kV Antistatic ≤ 2kV Antiestáticas ≤ 2kV antistatisch

* We recommend the use of Altro Aquarius™ for combined shoe and barefoot use in wet and dry areas such as hospital bathrooms and Altro Marine™ 20 / T20 for barefoot use in wet areas such as shower cubicles. Always check local regulations.

** Caution Ketone/Aromatic solvents. Please contact Altro for further technical advice regarding staining and chemical resistance.

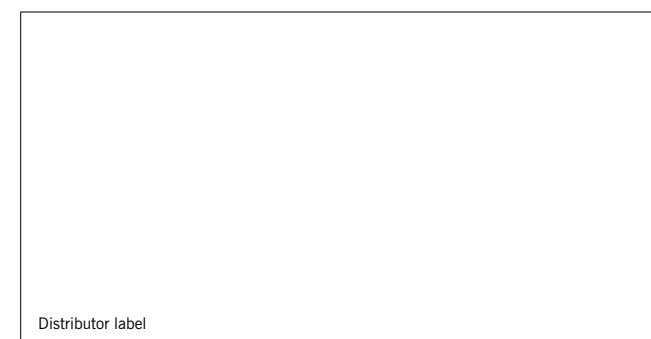
Installation and maintenance

All installations in accordance with Altro safety flooring instructions and local codes of practice. Please refer to Altro cleaning card for maintenance advice. Failure to install and maintain Altro flooring in accordance with installation instructions can affect its performance and slip resistance. Floors should be protected from other trades and thoroughly cleaned before handover.

These products have never contained phthalate plasticisers.

All information is correct at the time of print and is subject to change without prior notice.

Visit us at www.altro.com for more information and updates.

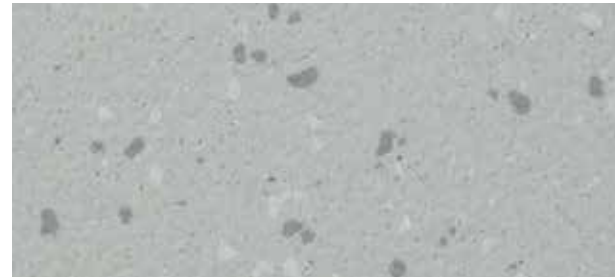


Altro Limited a company certified by SGS to ISO 9001 and ISO 14001.

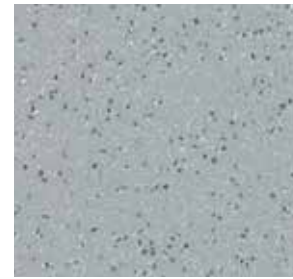


For further technical information please visit www.altro.com / www.asf.com.au
 Si desea obtener más información técnica, visite www.altroscandess.com
 Weitere technische Informationen finden Sie auf unserer Website www.altro.de

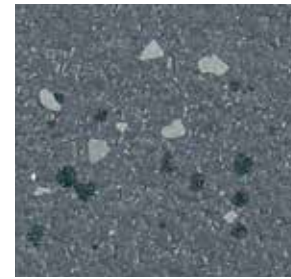
EN13845



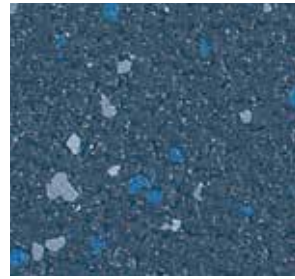
Streetlight UBI2505
WR287 / A1M79 / LRV 45



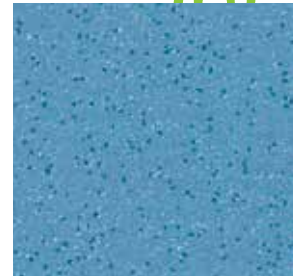
Temple UB2509
WR261 / A1M81 / LRV 27



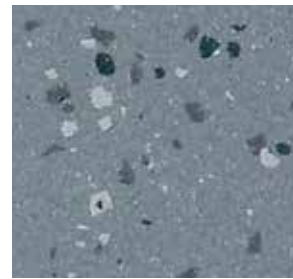
Pavement UBI2507
WR83 / A1M83 / LRV 14



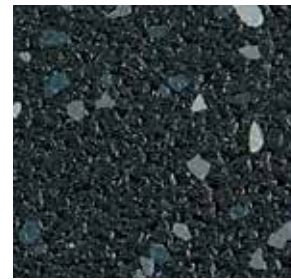
Pool UBI2503
WR307 / A1M73 / LRV 10



Stream UB2501
WR288 / A1M71 / LRV 22



Rock UBI2504
WR84 / A1M84 / LRV 23



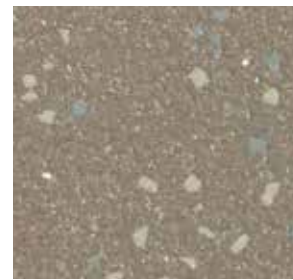
Vault UBI2517
WR277 / A1M100 / LRV 5



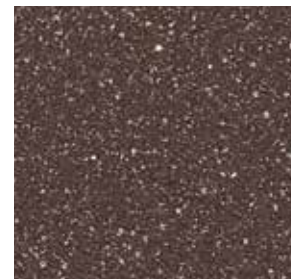
Runway UB2506
WR72 / A1M72 / LRV 9



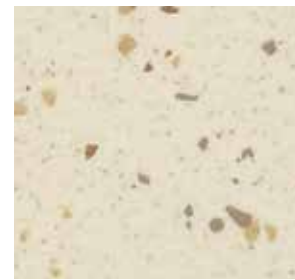
Fountain UBI2502
WR306 / A1M71 / LRV 22



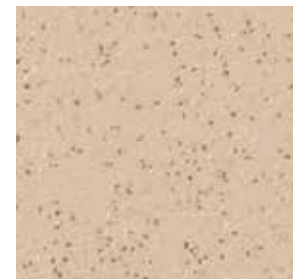
Monument UBI2508
WR305 / A1M239 / LRV 23



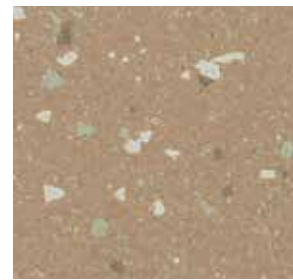
Gallery UB2511
WR62 / A1M62 / LRV 10



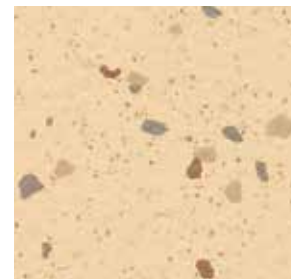
Ice Rink UBI2514
WR291 / A1M01 / LRV 70



Arena UB2510
WR297 / A1M20 / LRV 41



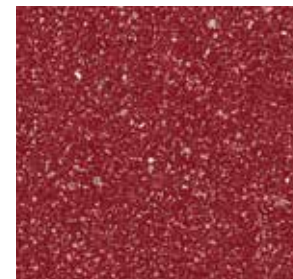
Plaza UBI2512
WR27 / A1M27 / LRV 32



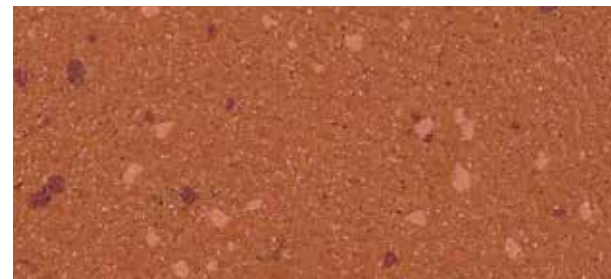
Statue UBI2513
WR304 / A1M12 / LRV 62



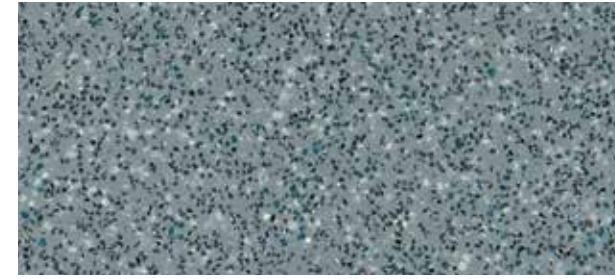
Roof Garden UB2500
WR262 / A1M154 / LRV 23



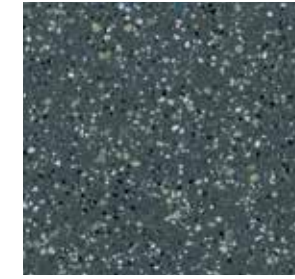
Forge UB2515
WR248 / A1M238 / LRV 9



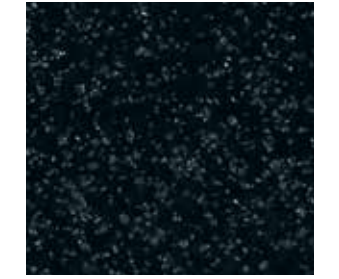
Signal UBI2516
WR300 / A1M42 / LRV 13



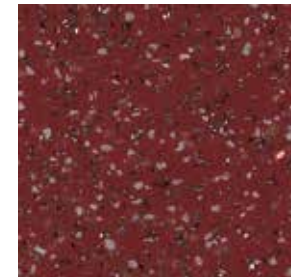
Fog D25153
WR81 / A1M81 / LRV 27



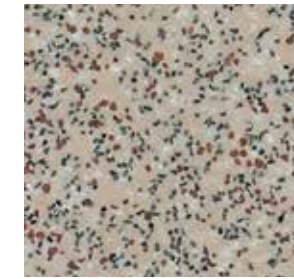
Storm D25903
WR82 / A1M82 / LRV 16



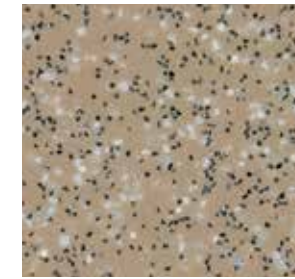
Jet D2501
WR100 / A1M100 / LRV 6



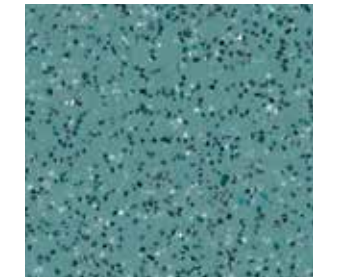
Rust D25907
WR150 / A1M238 / LRV 10



Bone D25215
WR20 / A1M20 / LRV 37



Biscuit D25904
WR146 / A1M20 / LRV 30



Skyline D25332
WR52 / A1M52 / LRV 25

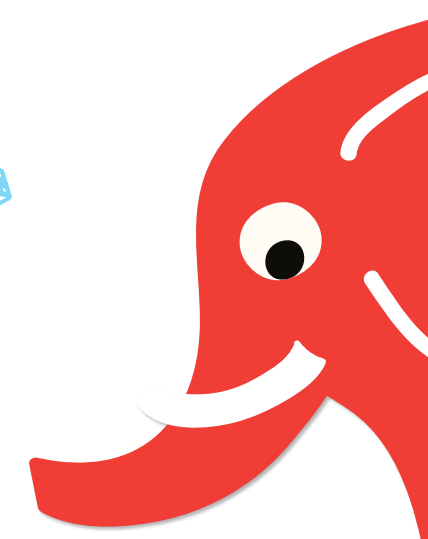


Midnight D25421
WR72 / A1M72 / LRV 11



Twilight D25910
WR39 / A1M34 / LRV 8

Only a **diamond** is harder than the **aluminium oxide** and **silicon carbide** used in our 2.5mm safety flooring.



Light reflectance values measured in accordance with BS8493:2008. Exact material match with samples cannot be guaranteed.
No podemos garantizar que el material del suelo de seguridad coincide exactamente con el de las muestras.
Eine exakte übereinstimmung des materials mit mustern kann nicht garantiert werden.

Codes: WR = weld rod, A1M = mastic, LRV = light reflectance value.
Códigos: WR = Cordón de soldadura, A1M = Mástique, LRV = Valor de reflectancia de la Luz.
Abkürzungen: WR = Schweißschnüre, A1M = Altro mastic dichtmasse, LRV = Lichtreflexionswert